



Lightroom Mobile: Importing

Lightroom Mobile: Importing

In this lesson, we'll be learning how to use Lightroom Mobile on a tablet. In the lesson video, I am using an iPad Mini, but an iPad Pro would probably be more ideal because of its larger screen. We will specifically be looking at how to get images from your camera to the tablet and managing the files on the device, because it's not quite as straight forward as you might think.

Import Devices (Timestamp 00:55)

The images captured on your digital camera are usually stored on an SD memory card and there are many different options for how to get them onto the iPad. The first minimal-setup option would be to use a USB cable, connecting one end to your DSLR and the other end to the iPad (as long as your tablet has a new enough connector).

The second method would be to use an SD card reader. This is a simple device that you slide your SD card into and then the other end goes into your computer. The only problem with this method is that the iPad only has one connector so you would not be able to simultaneously back up your images to a different device while importing to your iPad.



A third method for importing would be to use a USB hub. This plugs into your iPad on one end via USB C and the other side has multiple connection options. You can insert the SD card into one slot and a separate hard drive into another slot.

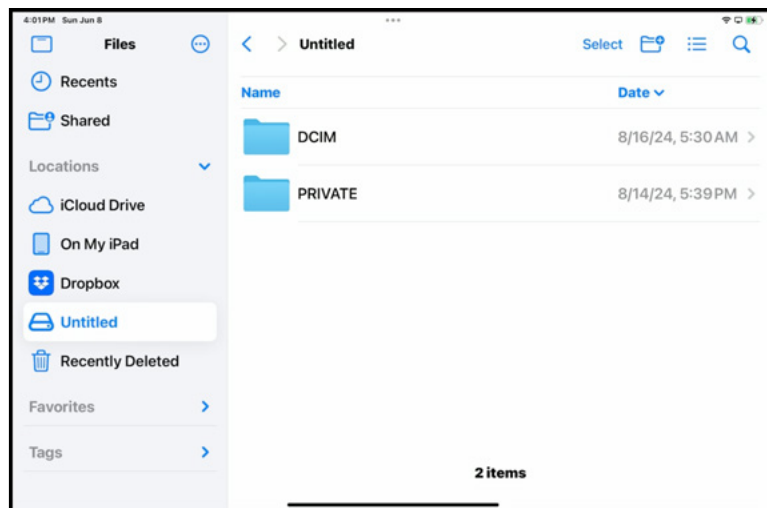
File Storage on an iPad (5:43)

The way files are stored on an iPad is very different from the way they're stored on a computer. When you store files on a computer, you can interact with those files using most programs as well as your operating system.

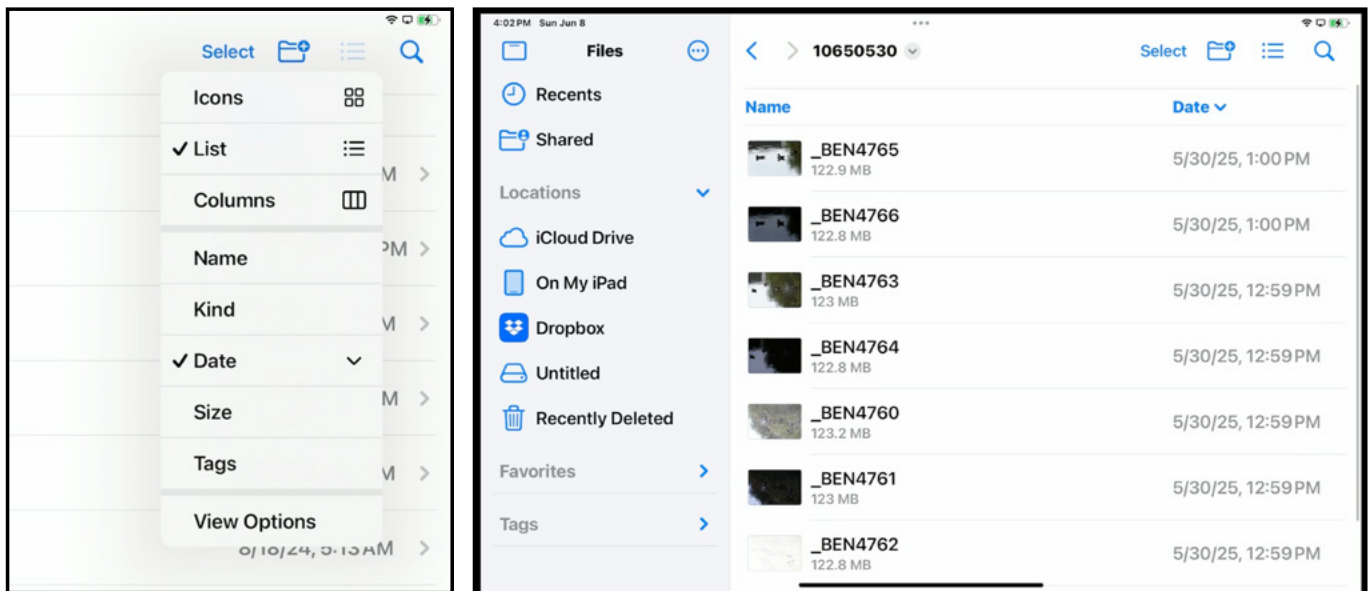
Any time you transfer a file on the iPad, that file needs to be contained within an application. For example, if you have Lightroom installed and you import your images into Lightroom, then it's only Lightroom that's going to be able to work with those images. Some apps can talk to each other, but that's mostly to transfer or preview images. For this reason, it might get a little more complicated depending on where it is you want to work with your images and which app you're using.

Importing Photos into the Files App (6:58)

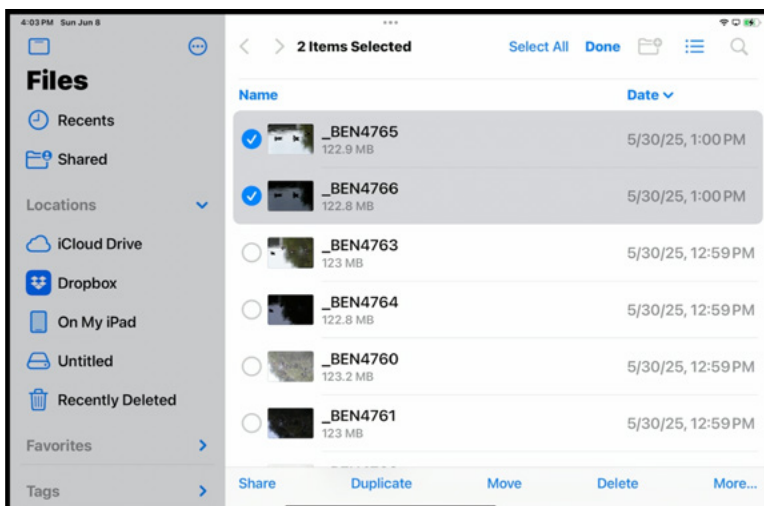
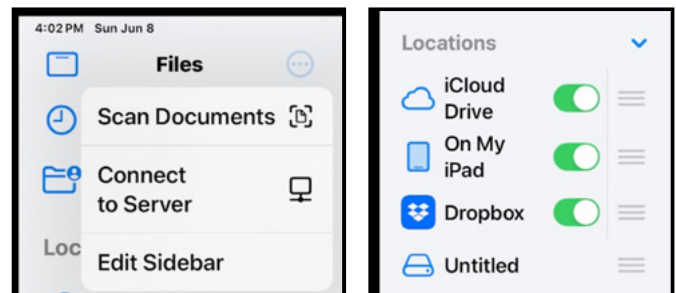
We're going to start in the Files app, which is automatically installed on all iPads. Here, you can see all the file storage options on the left side of the interface. When I plug my SD card reader into the iPad, you can see a new hard drive icon appear under the Locations category on the left side. Tap on it and the contents will appear in the main window.



Digital cameras have a standard process of storing files in a folder called DCIM. Tap on this folder and you will get a series of subfolders, which contain your images. In the top right, there is a list icon. Tap it and you'll get a menu of view options. I personally like to use the List view because it shows you the date. (See screen shots on the next page)



Tap on one of the folders to see its contents. If you want to copy these images to your iPad from within the Files app, you can point the images to one of the locations that appears on the left side. You can control what appears in that list by tapping the three dots icon at the top of the list. In the menu that appears, tap the Edit Sidebar option and you will get toggle switches that allow you to specify what locations appear in the list. You can also drag and drop the locations to change the order of the list. If you'd like to temporarily hide the sidebar, tap on the icon in the top left corner of the screen.

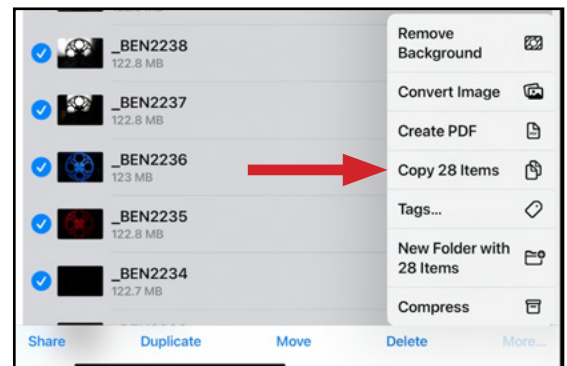
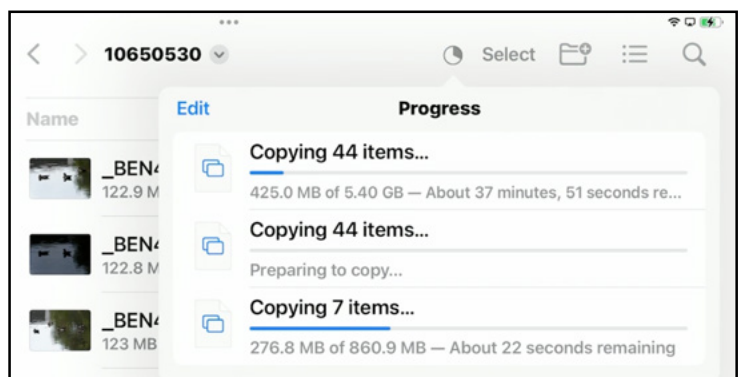
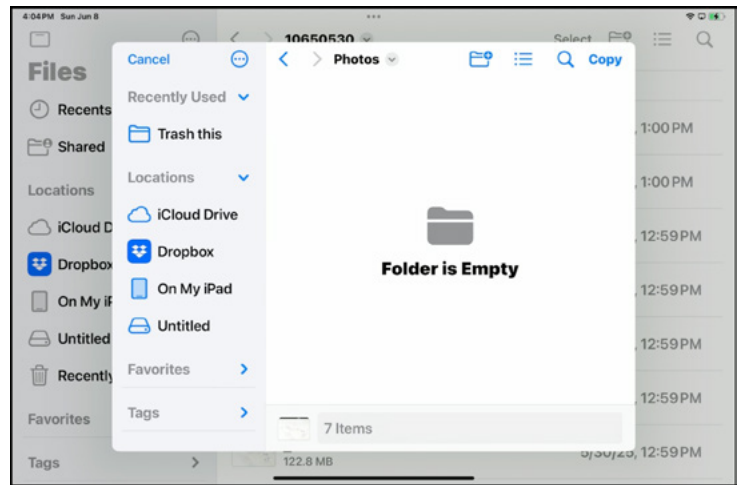
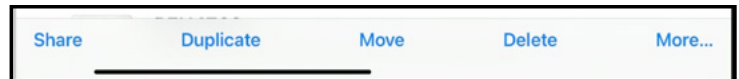


To copy images to the iPad, you first need to select the images. Tap the Select button at the top of the screen and then tap on the circles to the left of the images to select them. Alternatively, you can tap the Select All option at the top of the screen.

After you select images, some choices appear along the bottom. Tap on the Move option and you'll be prompted to choose the destination. If there is already an existing folder where you want the images to go, you can tap that. If there is not already an existing folder, tap the "On my iPad" option on the left and then tap the New Folder icon at the top of the window. The new folder will appear and you'll be able to give it a custom name. The folder will open to show its contents, which is currently "empty."

Since we had chosen the Move option after selecting images, a Copy option will appear in the top right corner of the folder window. Tap this and the images will start to import. A pie chart icon will appear at the top to show you the progress. Tap the icon to see the progress in more detail. Don't disconnect the SD card reader until all of the images have been imported. To import more images, tap the back icon (<) in the top left corner of the folder window to navigate back to the contents of the SD card. Then repeat the process.

Another way of importing the images is to click on the three dot icon at the bottom of the Select screen and choose Copy from the menu that appears. With this method, it's not going to automatically ask you where the images should be placed. Instead, choose the location from the list on the left side of the screen.



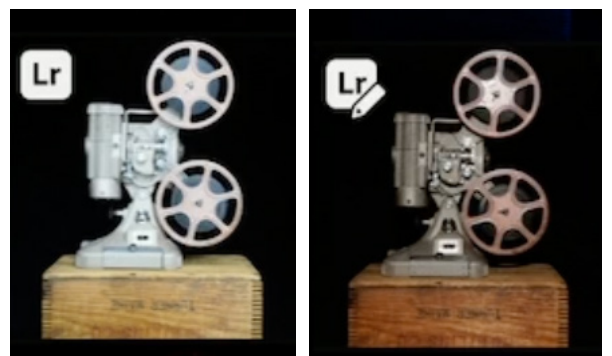
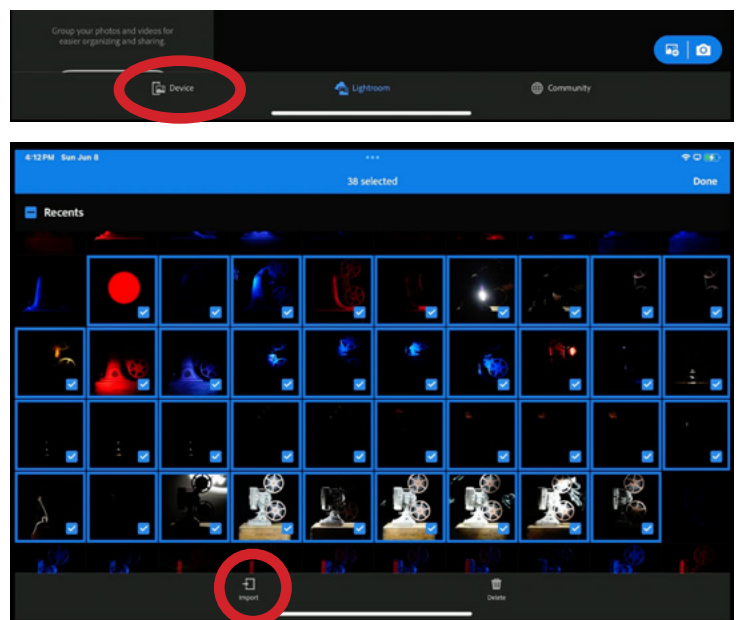
In the video example, I plugged a small SSD drive to the iPad and chose that. I use this drive to back up my image files. Create a new folder in which to place the images and open that folder. Tap and hold your finger inside the folder window and a menu will appear. Choose the Paste option and the images will start to be copied to that folder. What's nice about using the Copy/Paste option is that you can copy a set of images and then paste them to more than one location.

Importing Images into Lightroom (17:30)

Importing from your Camera Roll

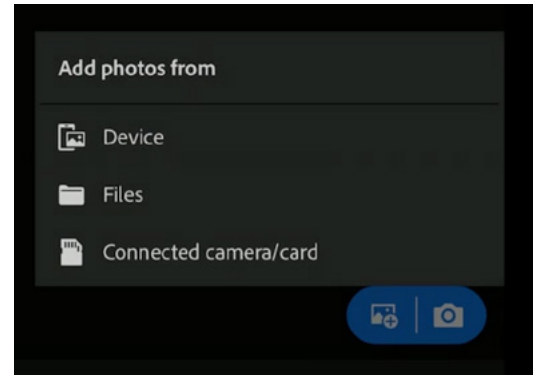
Lightroom also allows you to import images via an external drive or memory card, but you also have the option of importing from your iPad's Camera Roll. With the Lightroom app open, three options appear along the bottom of the interface. Tap on the Device option and you'll see the image thumbnails from the Photos app, aka your Camera Roll. Tap on images to select them, or tap and drag to select many images at once. Then tap the Import icon at the bottom of the screen.

When an image has been imported into Lightroom, a little Lr icon will appear in the corner of the image thumbnail. This means that there are now two versions of the image: the one on your Camera Roll and the one that has been imported into Lightroom. If the little icon also has a little pencil on it, it means that edits have been made to the image in Lightroom. Tap the Lightroom option at the bottom of the screen and you will only see the images that have been imported into Lightroom.

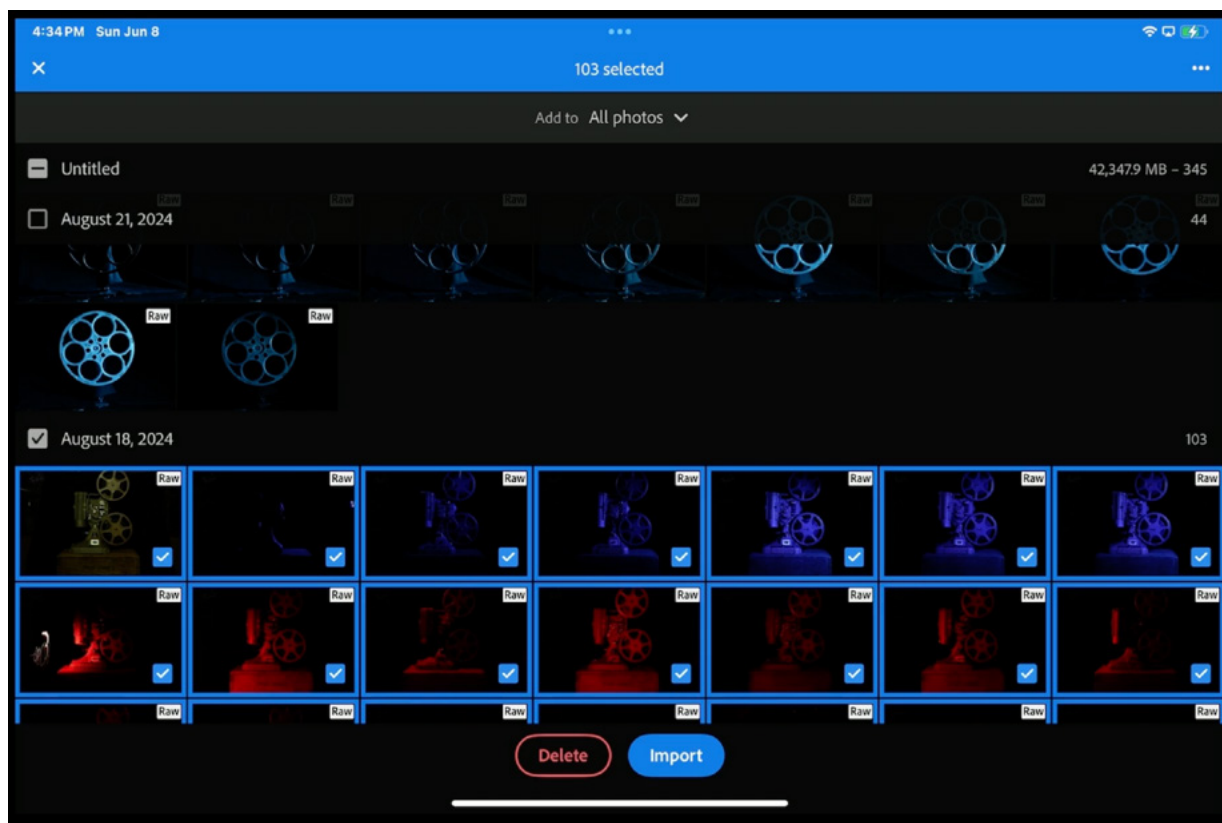


Importing from an external drive

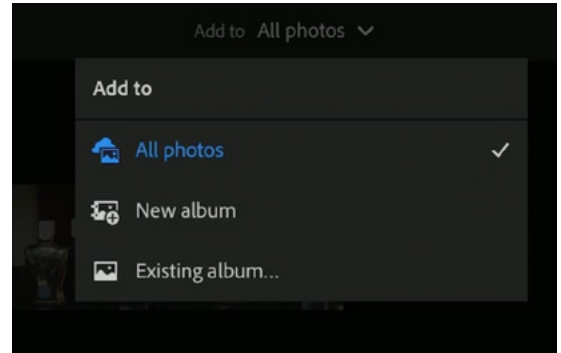
Plug your SD card reader or external drive into the iPad in order to import into Lightroom. Lightroom may automatically detect the device and prompt you to continue to import. If it does not, tap the blue Import icon in the bottom right corner of the screen. Three options will appear. The Device option refers to the images on your Camera Roll.



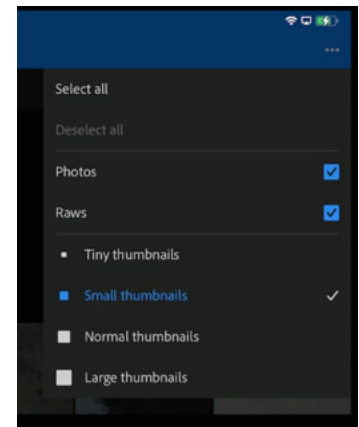
The Files option refers to images in the Files app. The last option is Connected camera/card and that's what we'll want in order to import via the attached drive or SD card. Thumbnails of the images on the card will appear on the screen. The images are categorized by date and you'll see that a check box appears to the left of the date. Turn this on to select all of the images shot on that particular day. To select all the images on the card, turn on the check box at the top of the screen, labeled with the name of the card or drive. With images selected, tap the Import button at the bottom of the screen.



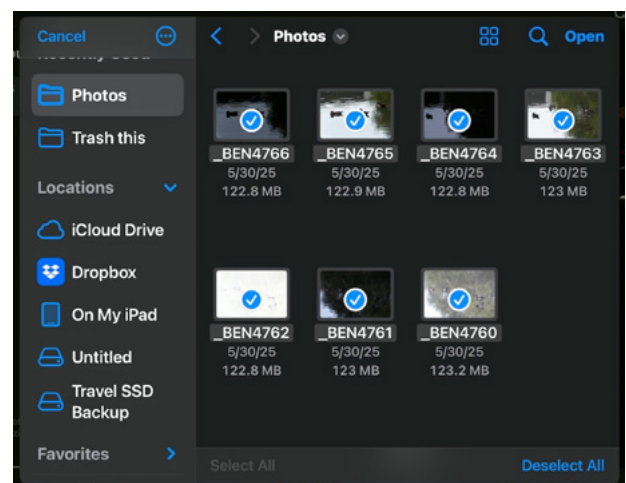
Before choosing to import, you can opt to add the selected photos to a specific album. Tap the “Add to” option at the top of the screen and you will see three options. The All Photos option will just add them without grouping them into an album. The New Album option will allow you to create a new album in which to place the images. The Existing Album option will allow you to choose one of the albums that you’ve already created. Note that an Album is the same thing as a Collection in Lightroom Classic on the desktop.



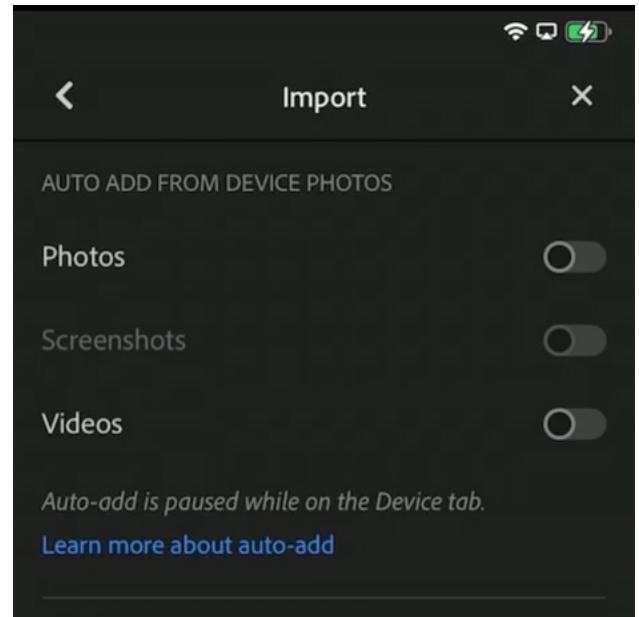
In the top right corner of the Import dialog, there is a three dots icon (...) and this will give you some settings. You can specify the size of the thumbnails that appear in the Import window. You can also specify what kinds of image files are imported. The Photos option will import all file types that are not raw and the Raws option will obviously include raw files. You can turn on one or both of these check boxes. In the image preview window, you can also pinch your fingers in and out in order to change the size of the thumbnails.



Importing from the Files app To import images that are in your Files app, tap the Import icon in the bottom right and choose Files from the pop-up menu. A window will appear, showing you the contents of your Files app. Early in the video lesson, I had moved some photos into the Files app, so we’ll choose the “On my iPad” option on the left side of the window and then tap on the Photos folder I had created earlier. While viewing the photo thumbnails, tap on them to select them or tap the Select All option at the bottom of the window. Then tap the Open button in the upper right and Lightroom will import the images.



Auto Import Images Tap on the three dot icon in the upper right corner of the Lightroom interface and some options will appear. Tap on the App settings option and then tap on the Import category. Here, there are options to automatically import Photos and Videos that were taken on the iPad or copied to the Photos app/ Camera Roll on the iPad. At the bottom of this menu, there is also an option to “Pause sync while importing” and this will just save the iPad’s battery usage while images are actively being imported.



Import from Photos App Finally, you can import an image while viewing it in your Photos app. Tap the Share icon and some app icons will appear in a horizontal menu. If Lightroom does not automatically appear in this menu, tap the More option at the very end. This allows you to control which of your iPad’s apps appears in the share menu.